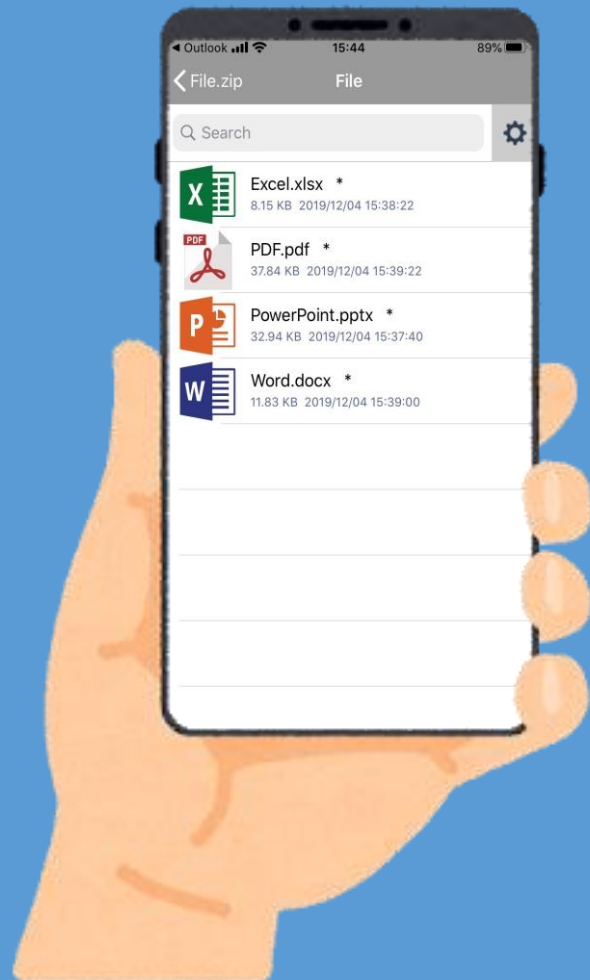




# ArchXtract

Download from the Store!



## Zip File Decompression Application For Microsoft Intune

# ArchXtract

## Number of users: More than 100,000

Introduction record(as of October 2024) - a major general trading company M, a major broadcasting company N etc.

Case Study

Company Name:

TAISEI CORPORATION

Business Details:

construction, civil engineering,  
housing and real estate

Industry :

General construction industry



# What is ArchXtract?

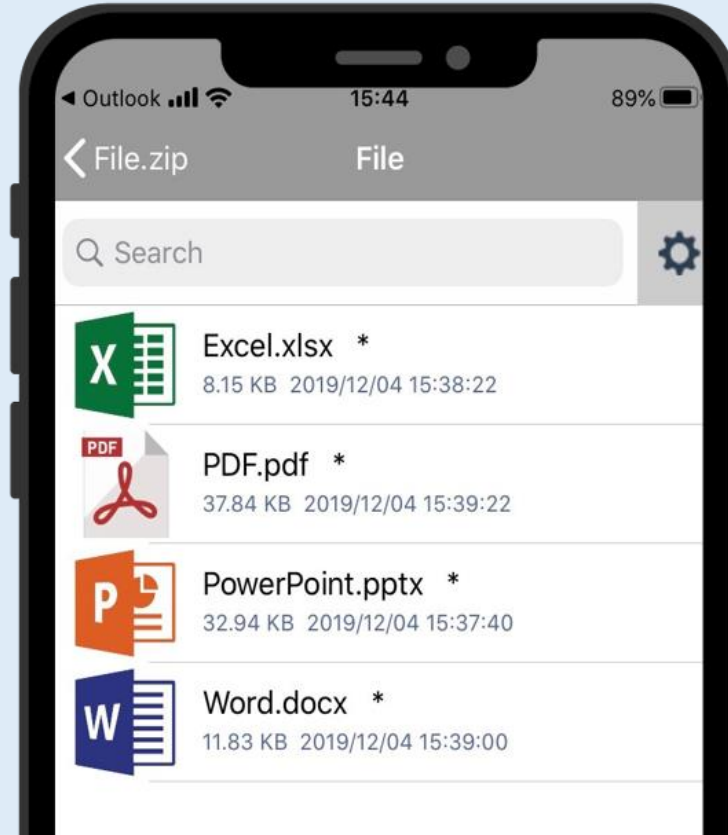
ArchXtract is a Zip file decompression application for Microsoft Intune. ArchXtract interact with Management Portal, and it is used for managing License. Administrators can unify the management of the application and greatly reduce the management work.

Admin



User Management

Device Management



User



Decompress

Intune support

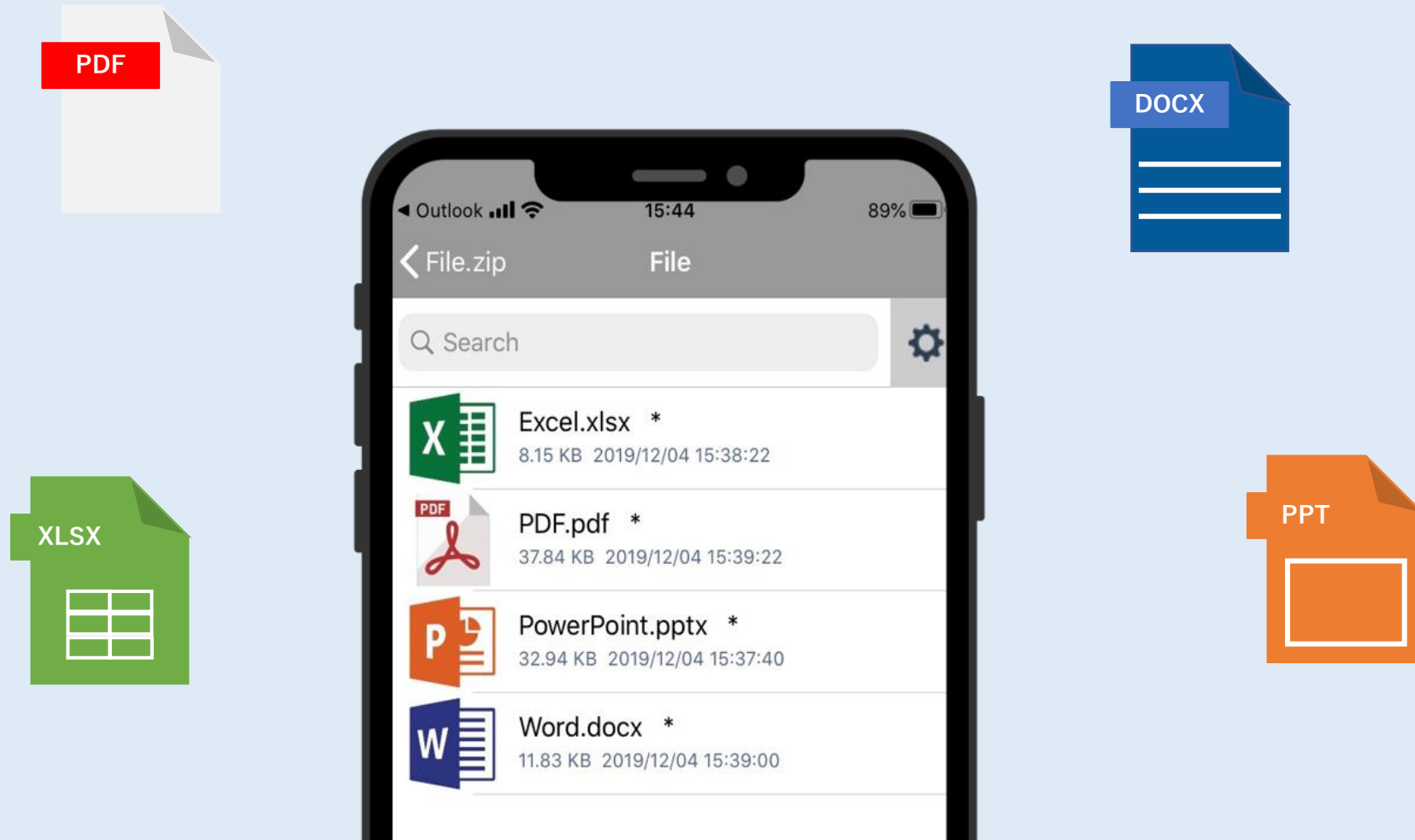
# Features 1: Wide range of compression formats

Function name	Overview	
	Process confirmed (2024.October)	Compressed form
Supported compression format	Windows Explorer	
	7Z	Deflate
		Deflate64
		BZip2
		LZMA
		PPMd
	WinZip	BZip2
		LZMA
		PPMd
	Winrar	
	Lhaplus	
	Mac	

※Note : Only Zip format is supported.

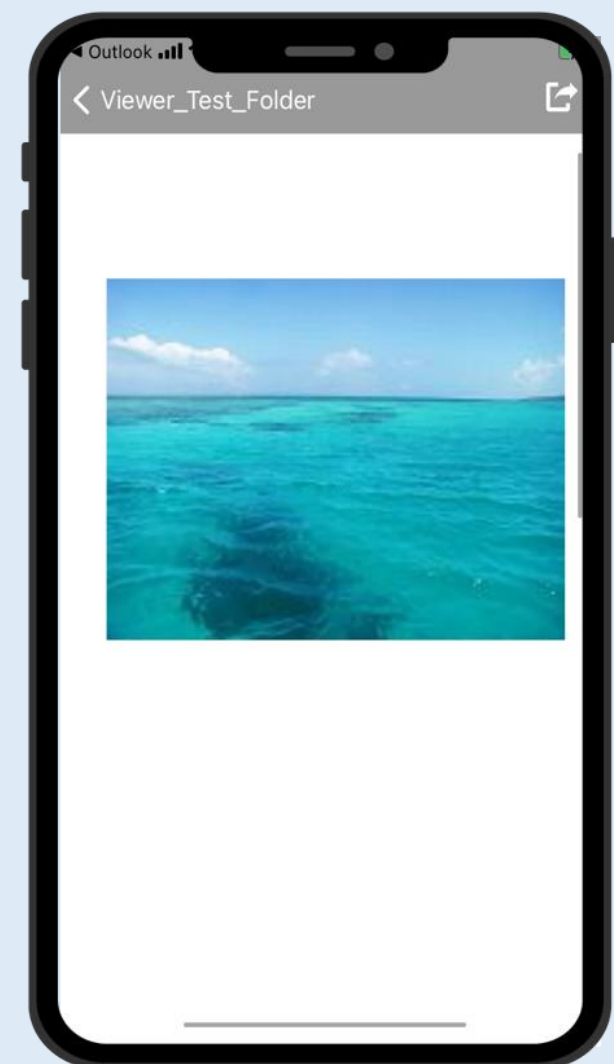
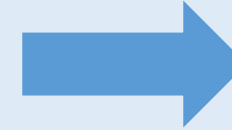
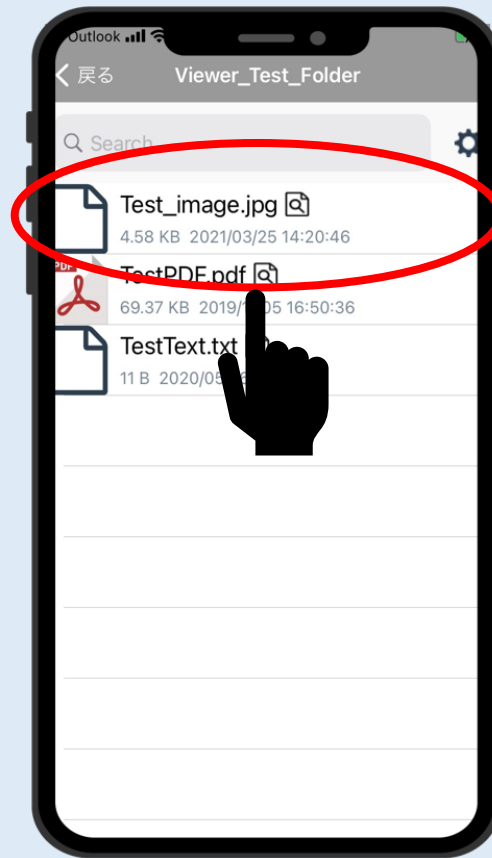
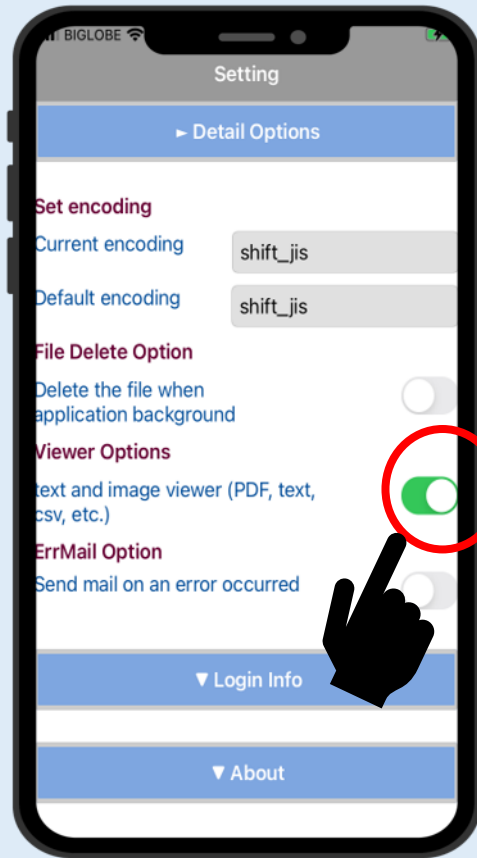
# Features 2: Decompression

ArchXtract can be linked with Intune-managed applications and can be linked with Outlook etc. to decompress Zip files.



# Features 3: Viewer

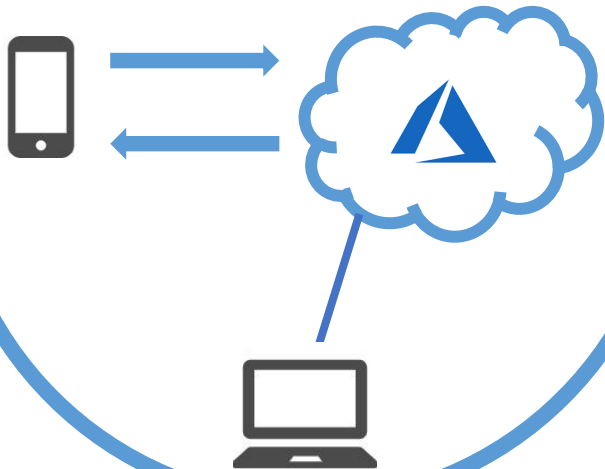
The viewer function is used to display unzipped image files and text on ArchXtract.



Supported formats	bmp, jpeg, png, gif, PDF ,txt, csv, html, xml
Supported OS	iOS、 Android

# Features 4 : Management

## Easy assignment



### License Automatic Assignment

Issued licenses will be assigned via Microsoft Intune Configuration Policy. When you use the app, Intune account information and device information is sent to the CEGB server under Azure.

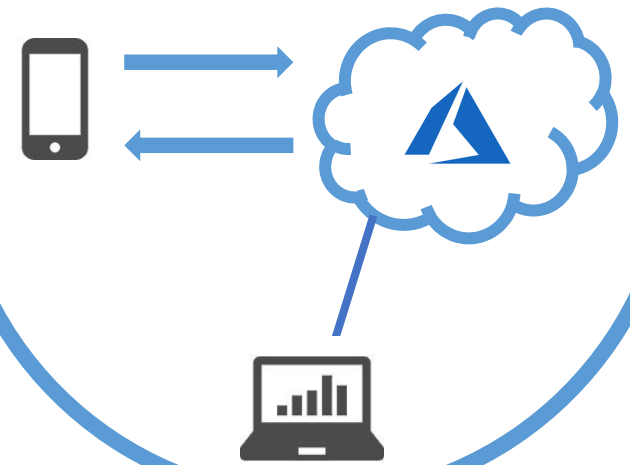
## License Management

Product Name	License Code	E-Mail Address	Device ID	Device Name	Type	Valid On	Updated	Allocation Status
ArchXtract					iOS	2020/11/13	2020/11/13 14:09:57	Assigned → UnAssign
ArchXtract					iOS	2020/09/24	2020/09/24 10:52:49	Assigned → UnAssign

### License Management

You can check the user's email address and mobile devices. You can also unassign and block unwanted devices.

## Visualizing App Usage Rates



### Visualizing App Usage Rates

You will be able to analyze the number of times the app is used by each user. You will be able to get the correct number of licenses on your next subscription.

✘ **It is a paid option. (See p.13)**

# Flow of Introduction

## STEP1

Contact

If you are interested in ArchXtract, please contact us for more information and a free trial or you can directly register through the link: <https://archxtract.cegb.co.jp/en/trial-en/>

## STEP2

Quotation &  
Contract

We will prepare a quotation based on the number of licenses you wish to purchase.  
You will be asked to sign a software license agreement separately.

## STEP3

Preparation

After you sign up, we will issue you a license code for the number of licenses you want to use.  
For more information on how to assign a license code in Microsoft Intune, please download the reference material from our website.

## STEP4

Start of use

After installation, we provide accurate and prompt support to our customers.  
We also provide support when upgrading the OS and Intune SDK.



# Post-implementation support

## Email



[ze\\_support@cegb.co.jp](mailto:ze_support@cegb.co.jp)

10:00~16:00  
(excluding weekends  
and holidays)

## Email

---

If you would like us to respond to you by email, please use the email address above to ask a question.

## Help Page



<https://archxtract.cegb.co.jp/en/support-2/>

24 hours  
available

## Help Page

---

You can check frequently asked questions and basic operations.

# Email support (Free)

Service	Contents
Support	<ul style="list-style-type: none"><li>• Consultation regarding defects</li><li>• Inquiries at the Initial stage</li></ul>
Update support	<ul style="list-style-type: none"><li>• Support for major mobile OS version upgrades</li><li>• Support for Microsoft Intune SDK version upgrade</li><li>• Appropriate support for updating libraries and development environment</li></ul>
Document provided	<ul style="list-style-type: none"><li>• ArchXtract Introduction</li><li>• ArchXtract Administrator Manual</li><li>• ArchXtract User Manual</li><li>• ArchXtract Initial Setting Manual</li></ul>

# Option (paid)

## ■ Optional support

Option	Contents
Additional support fee (JPY5,000/h)	<ul style="list-style-type: none"><li>• Individual response due to customer-specific circumstances (case: changing the contract details more than once)</li></ul> <p>※Requests for correction of contract details will be accepted free of charge for the first time. In the case of the second and subsequent revisions, an additional administrative fee will be charged as an additional fee. In addition, we may charge a fee for correction requests that are difficult to accept even for the first correction. (※Depending on the content, the correction requests may not be accepted)</p>
Technical support (JPY20,000/each time)	<ul style="list-style-type: none"><li>• Setting consultation due to customer-specific environment</li><li>• Consulting costs (Meeting support, etc.)</li></ul>

## ■ Optional function

Option	Contents
Analysis Screen (JPY40,000 /month)	<ul style="list-style-type: none"><li>• You can check the current license usage status from the License Management.</li></ul> <p>※It is an annual contract. (This option can be added only at the time of contract or contract renewal. This option cannot be added during the contract period.)</p>

# Subscription

## Trial

30 days Free trial

You can try all the features for 30 days for free.

## Standard Plan

1) Less than 100 devices

Range	Annual amount
~100	JPY 100,000
+	
Service Charge	
JPY 25,000	

2) More than 101 devices

Range	Unit price / year
101~500	JPY 875
501~1000	JPY 750
1001~3000	JPY 625
3001~	JPY 500

※Even if the price increases due to price revision during the contract period, we will not charge the additional charge during the contract period.

## Unlimited plan

ArchXtract

ZipExtractor

Unlimited number of Licenses

JPY 250,000/month

(※ Annual contract only.)

ex.) ※ The calculation unit is 1 License = 1 Device.

case1 : installing 500 Devices

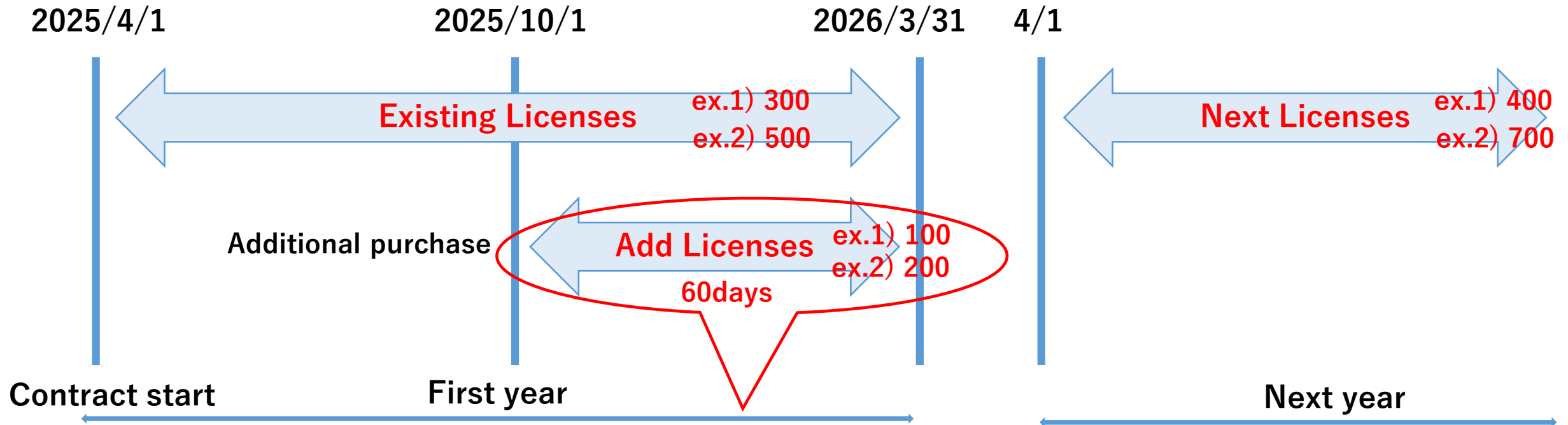
$$\begin{matrix} \sim 100 \\ \text{JPY}125,000 \end{matrix} + \begin{matrix} 101\sim 500 \\ \text{JPY } 875/\text{License} \\ \text{JPY } 875 \times 400 = \text{JPY } 350,000 \end{matrix} = \text{JPY } 475,000$$

case2 : installing 1,000 Devices

$$\begin{matrix} 500 \\ \text{JPY } 475,000 \end{matrix} + \begin{matrix} 501\sim 1,000 \\ \text{JPY } 750/\text{License} \\ \text{JPY } 750 \times 500 = \text{JPY } 375,000 \end{matrix} = \text{JPY } 850,000$$

# Price : Calculation method when adding Licenses

## ArchXtract Calculation method when adding a license



The calculation method of the additional license will be a daily calculation, and the contract period will be the same in the next year. The calculation method is to divide the additional amount by 365, multiply by the number of days from the additional date to the contract end date, and round of (Round up in 100 JPY increments). For example,

ex.1) 1<sup>st</sup> 300 + 2<sup>nd</sup> 100

ex.2) 1<sup>st</sup> 500 + 2<sup>nd</sup> 200

300 JPY300,000	100 JPY 875/License JPY $875 \times 100 \times 60 / 365$	Additional Fee JPY 14,400 +JPY 25,000 (Service Charge)	500 JPY 475,000	200 : next range JPY 750/License JPY $750 \times 200 \times 60 / 365$	Additional Fee JPY 24,700 +JPY 25,000 (Service Charge)
-------------------	--	---	--------------------	---	---

# Company Profile

Company Name	CEGB Co., Ltd
Address	〒112-0004 Kouraku Kashima Building 4F, 1-7-27 Kouraku, Bunkyo-ku, Tokyo, Japan
Telephone number	03-4566-3062
Number of employees	30 (2024 February)
Representative	President and Representative Director Takaaki Aota
Foundation	2005 November



If you have any questions, please contact us for the following.

< Reception desk >

CEGB Co., Ltd ArchXtract Support

E-mail : [ze\\_support@cegb.co.jp](mailto:ze_support@cegb.co.jp)

Reception hours: 10:00 a.m. – 4:00 p.m. (excluding Saturdays, Sundays and holidays)

#### TERMS OF USE



- Please note that the icon design, specifications and price of this application are subject to change without notice.
- Please note that the design and descriptions in this document are subject to change without notice.
- The content of this document is current as of October 2024.